



800 Poertner Drive
Berea, OH 44017
1-800-648-8022
www.flamingriver.com

INSTALLATION BULLETIN # 2011

DESCRIPTION: INSTALLATION AND ADJUSTMENT OF NEUTRAL SAFETY SWITCH.

WARRANTY: ONE (1) YEAR FROM DATE OF PURCHASE. REPLACEMENT OF PRODUCT DEEMED DEFECTIVE BY THE FACTORY. LABOR NOT INCLUDED.

Note: For this switch to work correctly the shift linkage must be properly adjusted to the detents in the transmission.

Adjustment:

- 1) Remove neutral safety switch from column by removing the two retaining screws.
- 2) While holding the back of the neutral safety switch towards you, align the slotted tab with the first hole from the left. This is the neutral position in the switch. Place a pin (straightened paper clip) in the hole to retain this position. (See figure A)
- 3) Place the gearshift indicator in the neutral position.
- 4) Place the neutral safety switch onto the column and attach the switch with the screws that were removed in step one. Snug the screws against the housing.
- 5) Reattach the wiring ensuring that the neutral safety wires are on the two flat terminals and the reverse lights are the two offset terminals. (See figure B)
- 6) Move the gear shifter through the range of gears. The engine should only start in neutral and park.

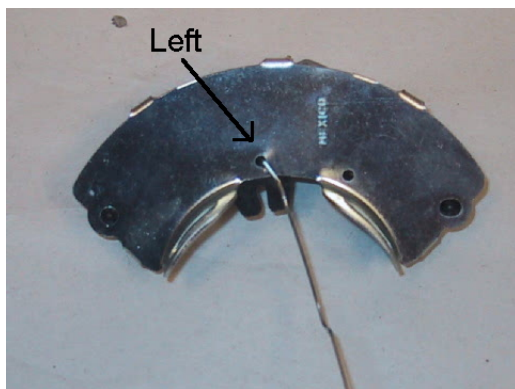


Fig. A

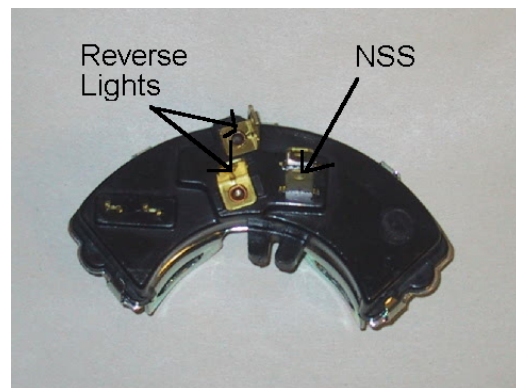


Fig. B

Warranty Disclaimer

Because of their intended usage, the manufacturer makes no warranties whatsoever expressed or implied, oral or written, to purchasers of their products regarding performance, safety, fit, merchantability or length of service. Purchasers are responsible for selection of proper goods and must rely on their own skill or judgment that such goods are suitable for the purchaser's application.